

Arvus International Limited

1st April 2022 – Firmware Update Instructions

There are two steps to this 9.1.6 Firmware Update

1. **.bin** file for the main PCB firmware
2. **.dnt** for the Dante board

1. .Bin file PCB firmware upgrade

1.1 Connect H2-4D and Router with network cable.

1.2 Power on H2-4D and find the ip address of H2-4D (for example : 192.168.1.222) from Router

1.3 Open H2-4D Firmware upgrade GUI webpage : 192.168.1.222, as shown in the figure 1.

The screenshot displays the H2-4D Firmware Upgrade GUI with the following sections:

- INPUT SOURCE**: A dropdown menu showing "ARC/eARC".
- NETWORK**: Fields for DHCP (set to "on"), IP Address (192.168.1.2), Gateway (192.168.1.1), Subnet (255.255.255.0), and DNS (192.168.1.1), followed by an "Apply" button.
- FIRMWARE**: Displays "MCU V1.014" and a "Firmware Update" button.
- CODEC IN USE**: A text field showing "N.E."

Figure 1

1.4 Click "Firmware Upgrade".

- 1.5 Select the new H2-4D firmware (such as H2-4D_mcu1.014_dsp1.43.bin).
The power LED will flash red during upgrade, as shown in the figure 2.

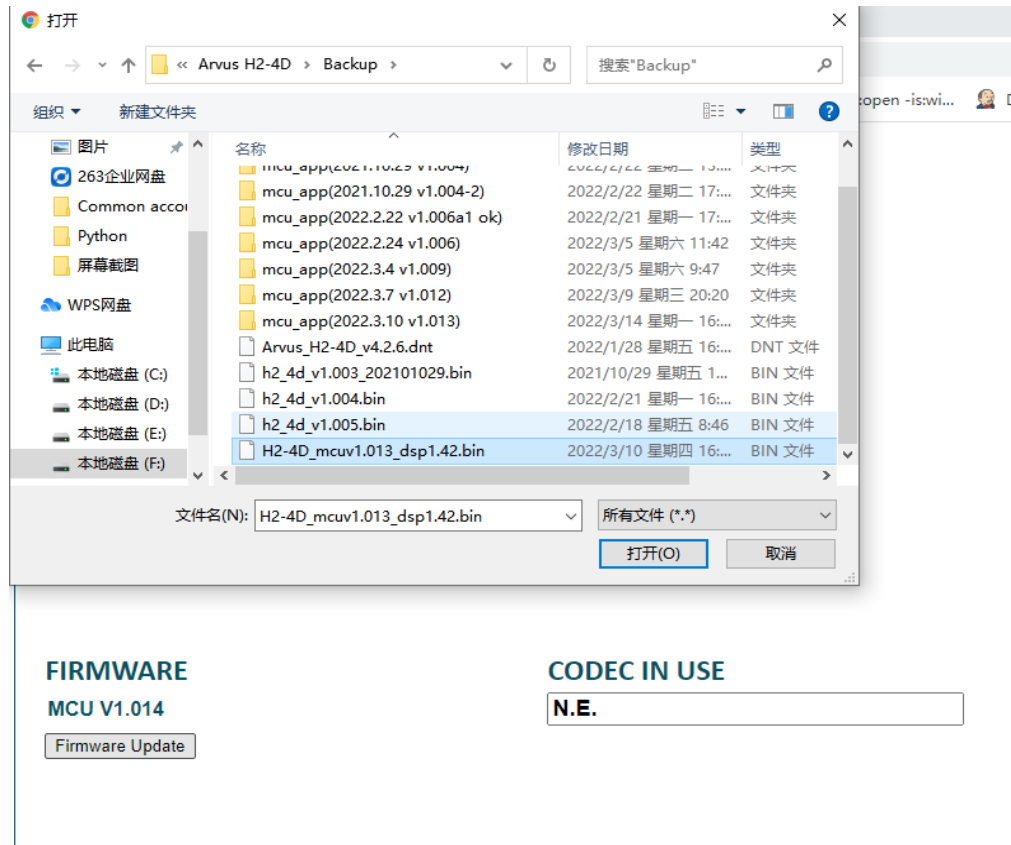


Figure 2

- 1.6 After about 3Min, if phase 1(download) of upgrade is succesfull, you will find “Update Complete” pop-up menu, as shown in the figure 3.

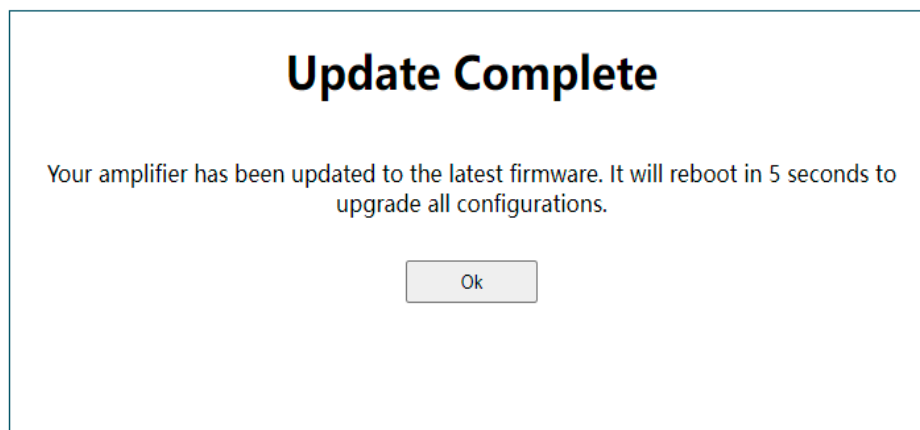
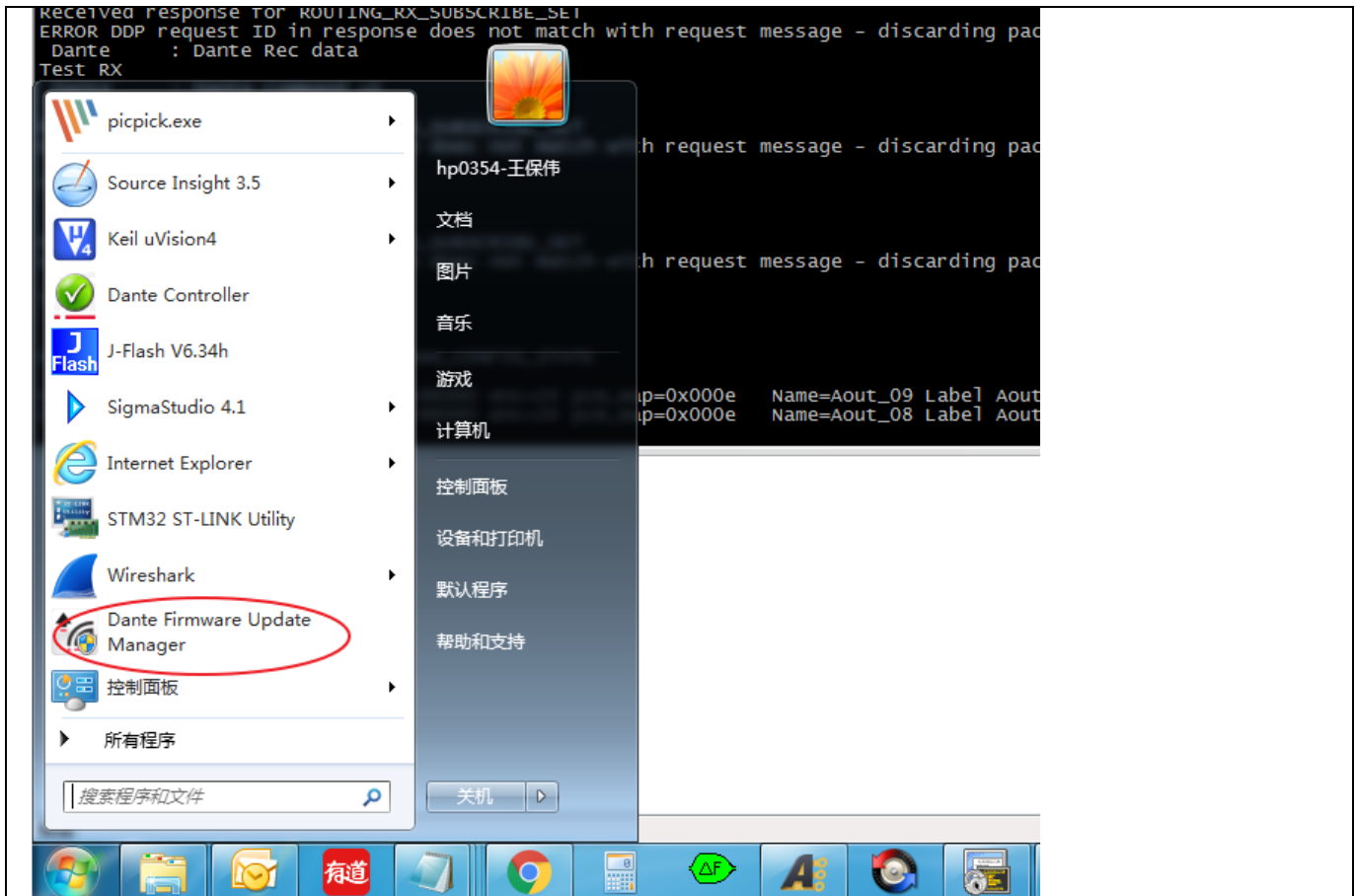


Figure 3

- 1.7 Click “Ok”, After about 1Min, H2-4D will restart to finish phase 2(burn) of upgrade.
Then enter in to normal process

2. .dnt file DANTE firmware upgrade

Rev.	Summary/Change details	Used for	Date
V1.00	First release		2022/3/28



2.1 App Installation

2.2 Upgrade Process

2.2a Connect H2-4D Dante Ethernet network Interface to router.

2.2b Connect PC to the same router.

2.2c Open “Dante Firmware Upgrade Manager”, click Next, as shown in the figure 1.

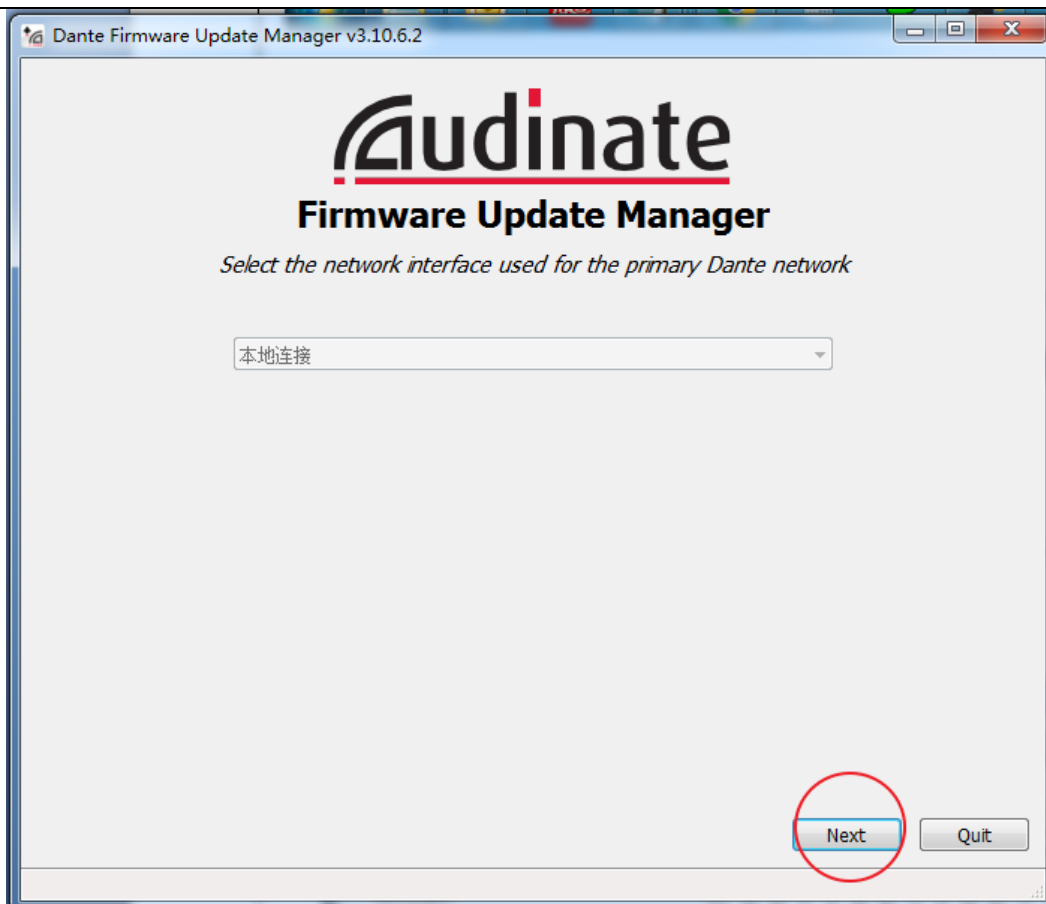


Figure 1

2.3 click “Update Dante Firmware”, as shown in the figure 2.

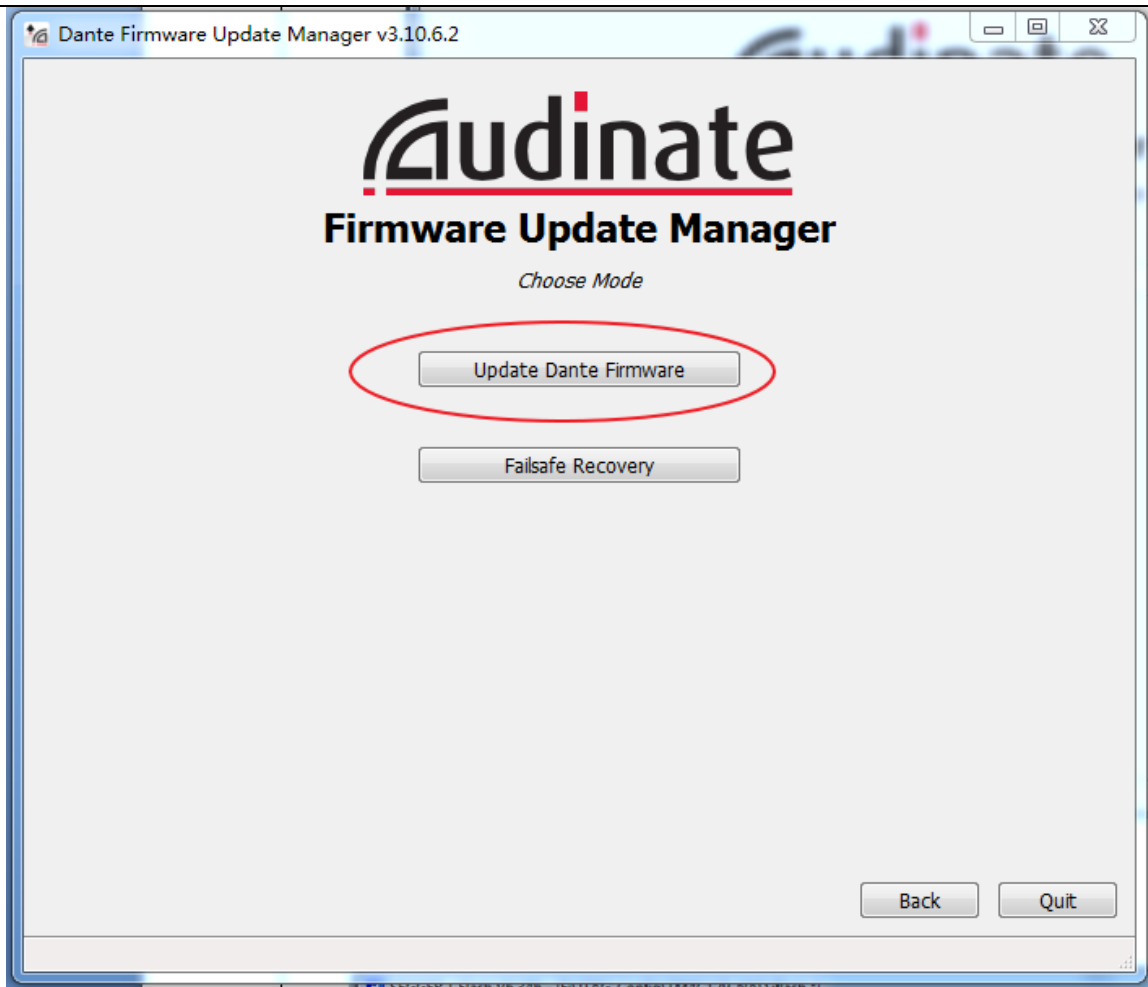


Figure 2

2.4 Open .dnt file, for example, Arvus_H2-4D_v2.001.dnt, check "Override Device Matching" option, then click next, as shown in the figure 3.

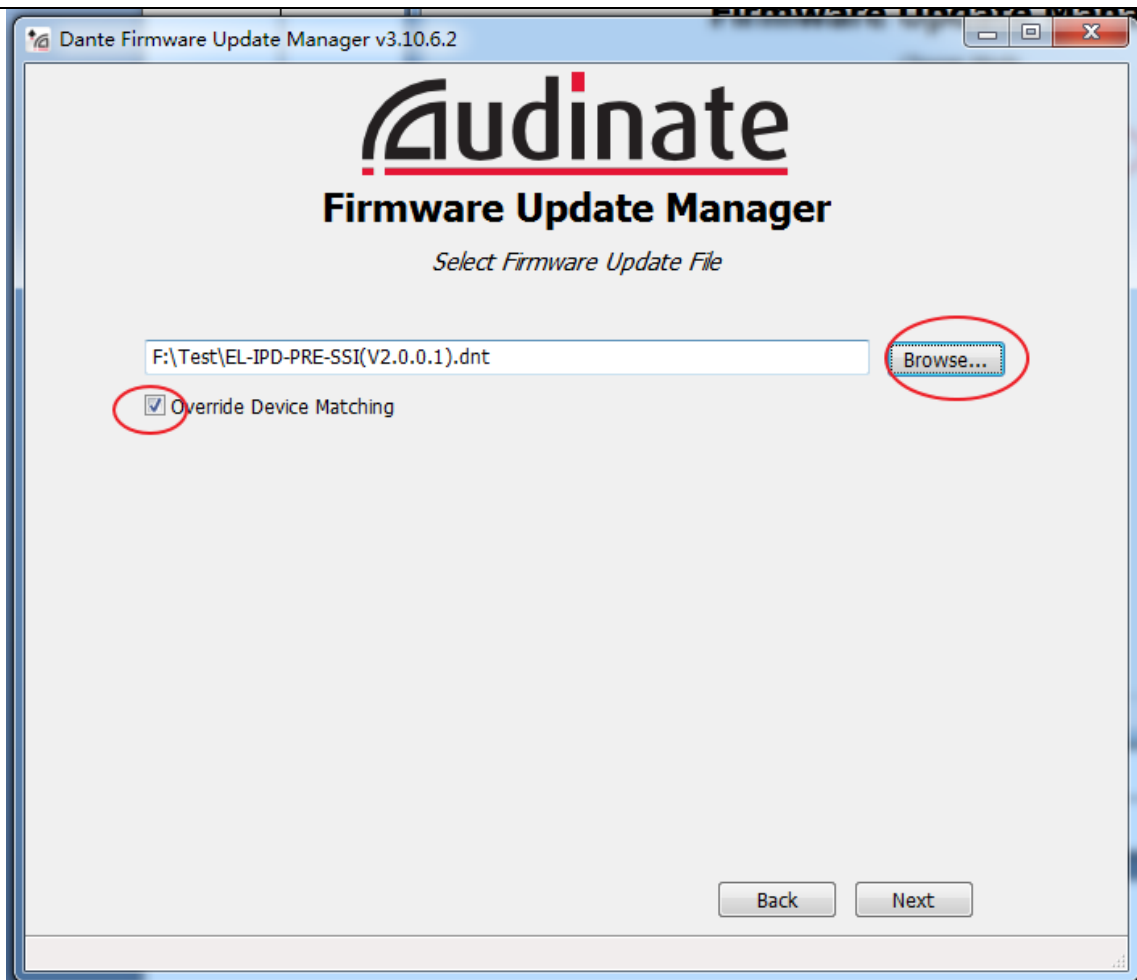


Figure 3

2.5 After searching the device to be upgraded, check the device to be upgraded and click Start to Start burning, as shown in Figure 4.

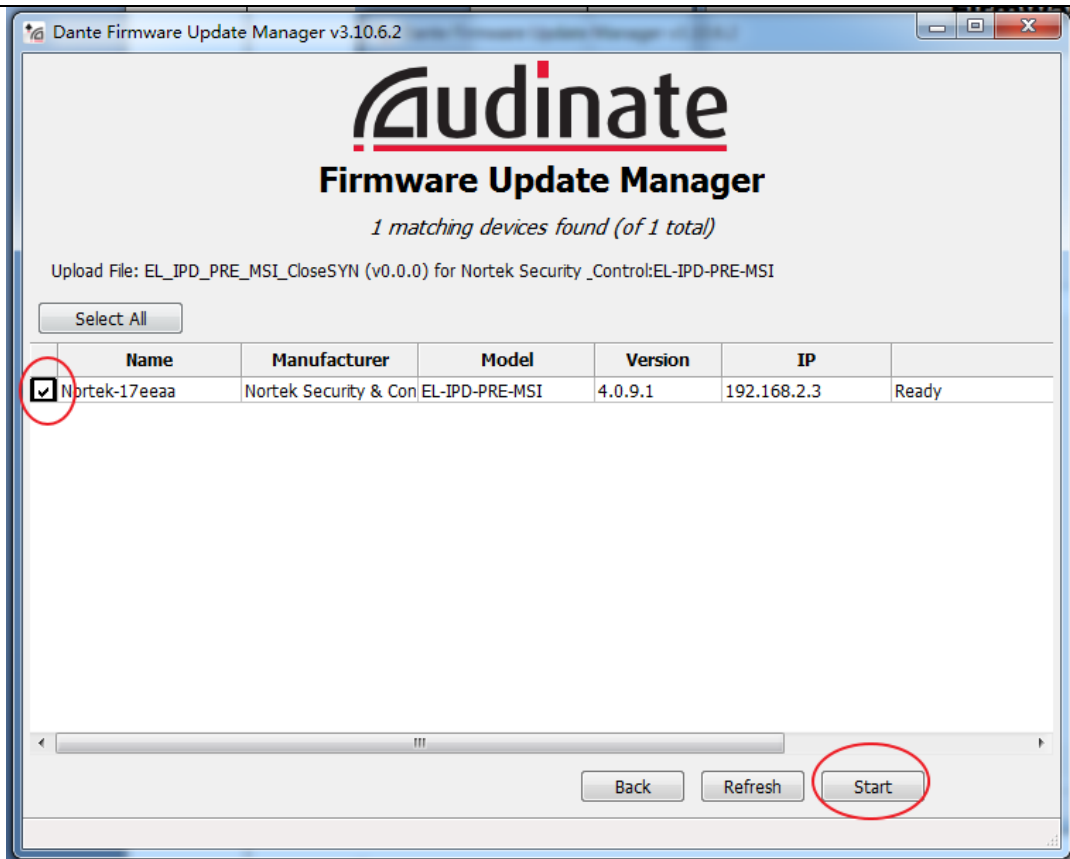


Figure 4

2.6 After upgrading, pop-up box displays "x devices have been upgraded", as shown in the figure 5 :

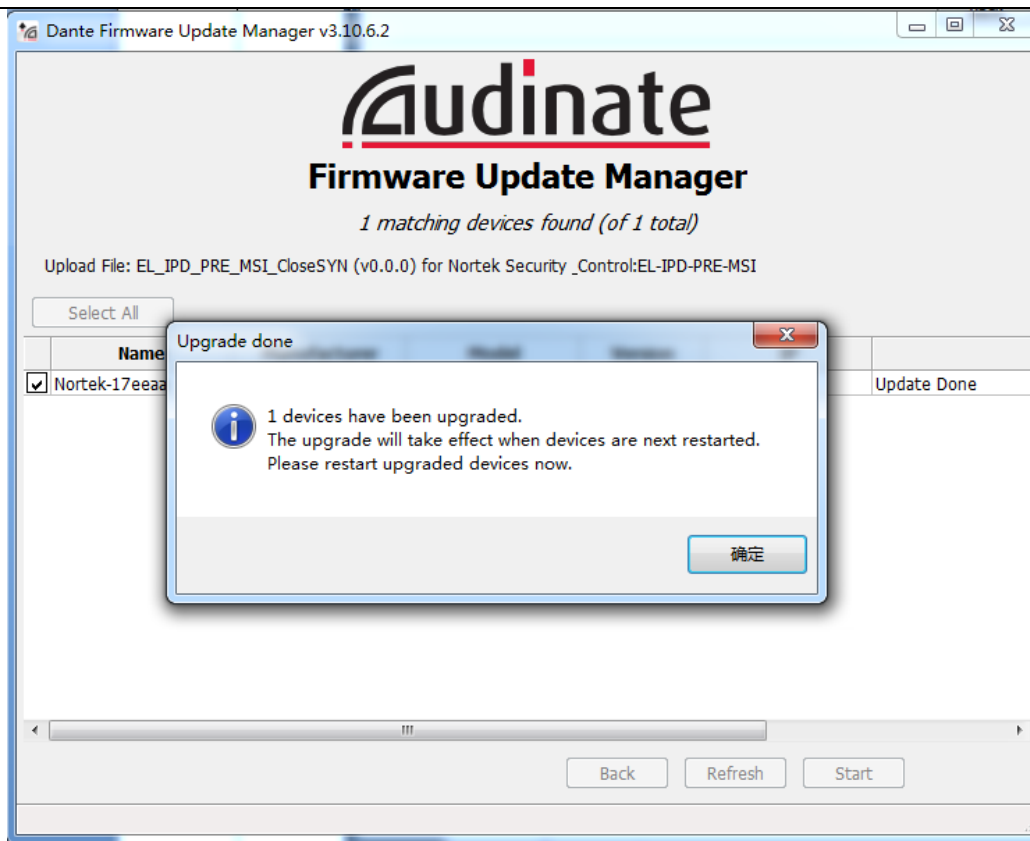


Figure 5

2.7 Cycle power on and restart the unit.